

Visitor Guide

The Royal Palm Vacation Condominiums

www.royalpalmcondos.com

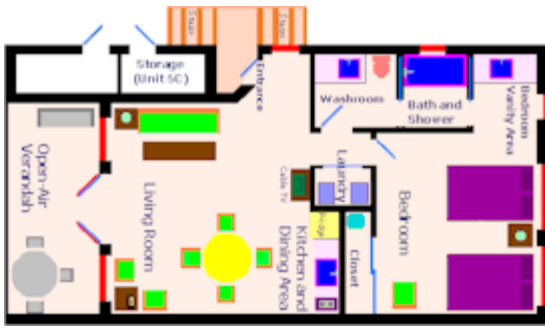


This is your visitor guide. It contains information about our complex, location maps, information about Ambergris Caye and Belize and our house rules for the Royal Palm Vacation Condominiums. We are located in beautiful San Pedro on the island of Ambergris Caye, Belize, Central America.

We are here to make your experience pleasant and memorable. If you have questions or concerns please contact XXX while you are a resident of our facility. Relax, kick back, enjoy!

Our commitment and our goal...

To make your vacation a wonderful experience and fond memory!

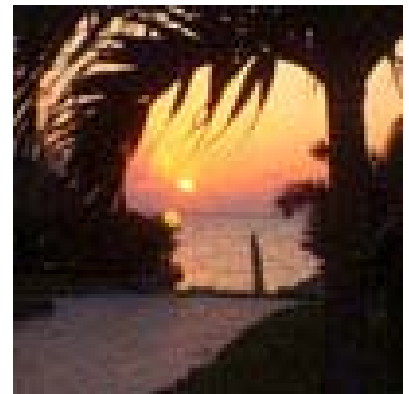


This is a typical layout of our 1 bedroom unit. The unit sleeps six, has a kitchen, refrigerator, TV and all the comforts of home. The 1 br also has a nice balcony. We have both upper and ground floor units. If you have special needs be sure to let us know.



This is a typical layout of our 2 bedroom unit. The unit sleeps six, has a kitchen, refrigerator, TV and all the comforts of home. Note – no balcony on 2 br. We have both upper and ground floor units. If you have special needs be sure to let us know.

The Royal Palm is located about 1.5 miles south of town. There are about 60 condominiums; all are not in the rental program. The majority of units in the program are in phase one which is the photo on the face of this document.



These are spacious condominiums with a design of four units per building. The one bedroom and the two bedroom units are constructed on the same footprint; the two bedroom unit however has no front patio or balcony; it has a huge sliding door in the front.

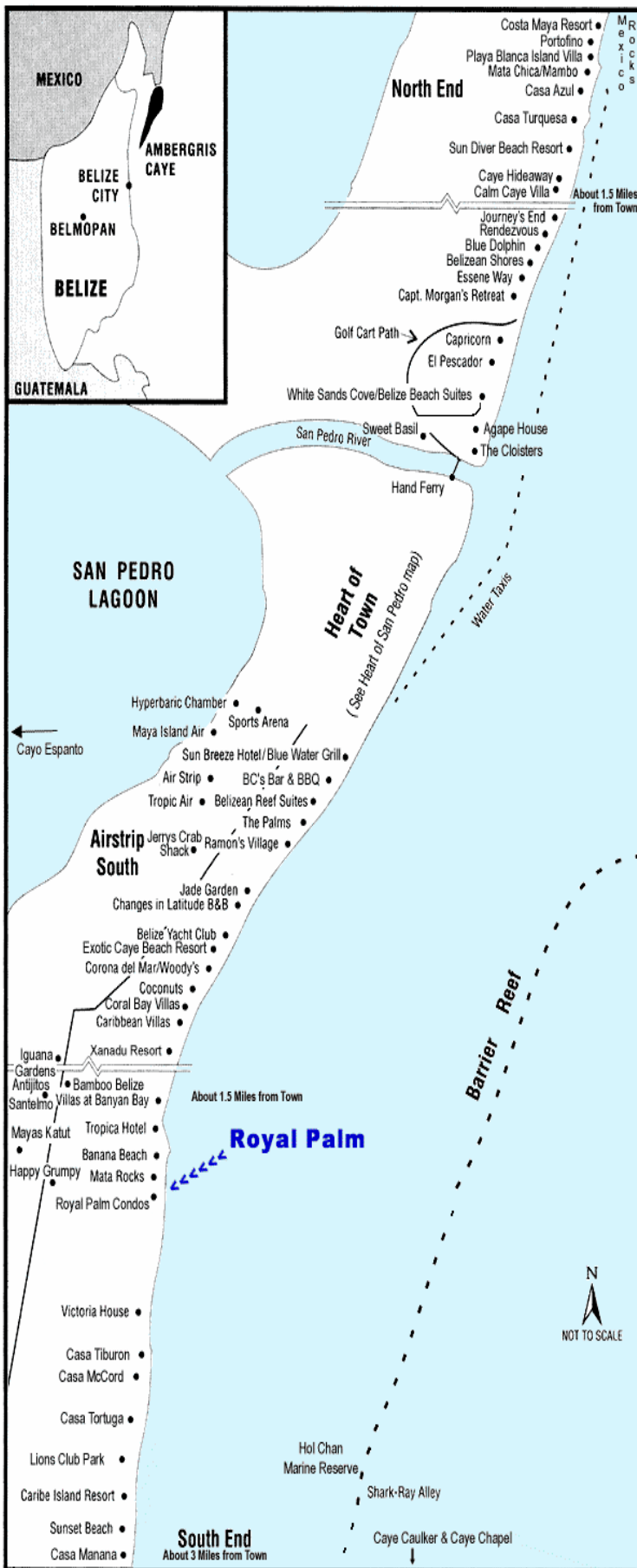
The location is convenient to restaurants and a small market. Dive boats pick you up right at our dock and tours can be made at the complex.

We are situated adjacent to Mata Rocks, between Banana Beach and the Victoria House. We have one of the largest and nicest pools on the island.



Whether at sunrise, or after dark, the ambiance of the Royal Palm with it's regal courtyard has not been duplicated in the Island. If you are seeking a truly relaxing atmosphere with the cool trade winds, the pristine turquoise sea, at a calm relaxing complex then you will feel right at home here at the royal Palm.

If you're seeking action, it all available at a short distance; diving, fishing, shopping and dining – they are all close or just a few minutes from the facility.



AMBERGRIS CAYE

The largest of the 200 plus islands of Belize, Ambergris Caye is a twenty five mile long island made up of three main areas. Mangrove swamps, lagoons, and sand.

The lagoons are to the western (leeward) side of the island. The Barrier Reef lies about a half mile to the east of the island, running the entire length, the reef and the land touching at the northeast of the island at Rocky Point.

The sand reaches a height of three to five feet above sea level, to a maximum of 10 feet at San Pedro Town.

THE NAME AMBERGRIS CAYE

On some very old maps, in the 1600's, the island now called Ambergris Caye is referred to as Costa de Ambar, Amber Coast in English. Amber is quite a different substance than ambergris and this discrepancy has puzzled some people.

Amber is the fossilized resin from trees that was quite familiar to Europeans long before the discovery of the New World, and prized for jewelry. The name ambergris is derived from the Spanish "ambar gris", ambar meaning amber and gris meaning grey, thus the name signifies grey amber.

At one time ambergris was treasured as first a remedy in European folk medicine and later in the perfume industry for its unique fragrance. It was found along the seashores in the Caribbean and in the Orient and was an extremely valuable commodity.



THE NAME BELIZE

The origins of the name Belize are as subject to speculation as are the origins of the first English settlement. The first non-Maya name for the Belize River was Rio Viejo which means Old River in Spanish.

Indeed one author has a page of reproductions of the names ascribed to the area in documents from the 1700's: Wallise, Wallis, Walix, Walis, Waliz, Valix, Valis, Balise, Balis, Baluz, Bellese, Bellise and Belize. Others have proposed that the name is derived from the French word balise, meaning beacon, reasoning that the early freebooters set a beacon at the river mouth to aid in navigation.

GENERAL INFO – If you are a beach and water person we have lots of it! Straight ahead in the photo to the right is the town of San Pedro. It's about a mile and a half up the beach. The weather is warm year round, the water temperature usually ranges from 79-83 degrees Fahrenheit.



The roads are not paved, and the favorite way of traveling is with golf carts. English is the first language of Belize, so communication is no problem. The exchange rate is currently \$1 US = \$2 BZ, very easy to calculate, and US currency is accepted by most businesses.



There is so much to do and see on Ambergris Caye, including diving, snorkeling, beachcombing, bird watching, fishing and shopping just to name a few. Belize is proud to have the largest barrier reef in this hemisphere, so don't miss the opportunity to see the colorful ocean creatures.

THE BELIZE BARRIER REEF is a complicated system of individual reefs extends from the Yucatan Peninsula to South America. The largest of these reefs is the Belize Barrier Reef. Not only is this the largest single reef in the Caribbean; it is also the largest reef in both the northern and western hemispheres. In fact it is second only in size to the Great Barrier Reef of Australia.

The Belize Barrier Reef actually begins at a point 5 miles (8 km) north of Belize near the small Mexican town of Xcalak. The reef then stretches south for 185 miles (298 km) before coming to an end near Hunting Caye.

The reef is like a gigantic wall running parallel to the coast. The distance from the reef to the mainland varies from 8 to 16 miles (1326 km), but is much closer at the northern portion off Ambergris Caye where it is clearly seen from the shore. Between the mainland and the reef are shallow sandy waters with numerous mangrove-covered islands (cayes).



You can use San Pedro as a base to tour much of Belize, including other cayes and much of the mainland. You can even do a day trip to Tikal. Our help desk will help you arrange tours and guides. Prices, schedules and destinations change regularly, depending on the weather. For information while out of the country use our website and contact info the site. Many thanks!